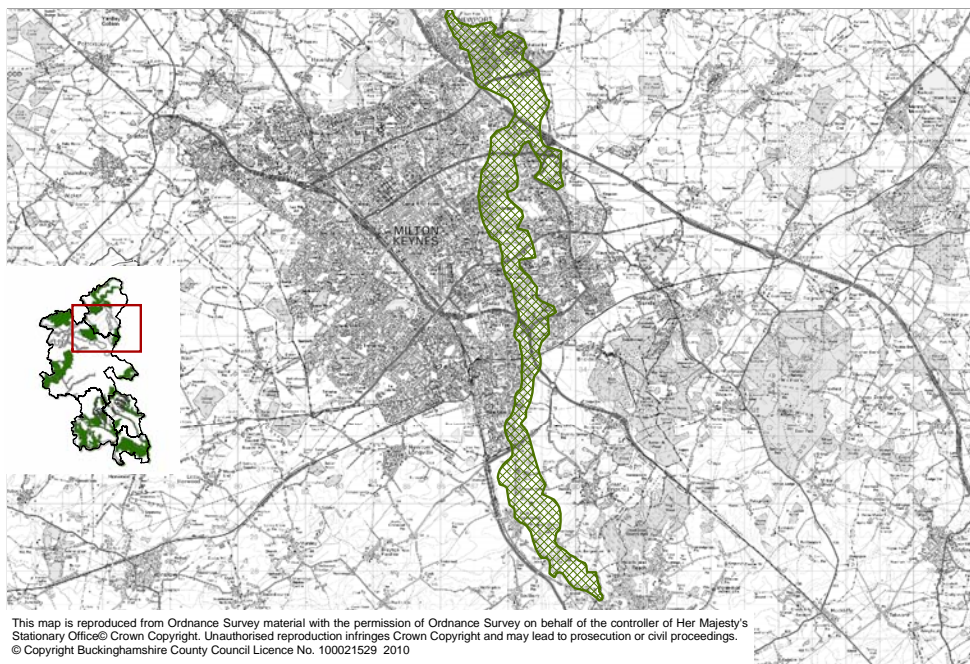


## Ouzel Valley Local Biodiversity Opportunity Area Statement



<b>Area Coverage</b>	1748 ha
<b>Number of Designated Sites</b>	Local wildlife sites 4
<b>BAP Habitat</b>	Reedbed 4 ha Wet Woodland 1 ha

*The River Ouzel flows from Leighton Buzzard through a narrow valley and into Milton Keynes City, north of which it joins the River Ouse*

*This BOA connects with Ouse Valley, Milton Keynes City, Greensand Ridge and Whaddon Chase*

**Joint Character Area** Bedfordshire & Cambridgeshire Claylands (a small area is in Bedfordshire Greensand Ridge)

**Landscape Types** Unwooded agricultural land

**Geology** Mudstone overlain by silt, head, sand and gravel

**Topography** In the north a broad flat bottomed valley which narrows sharply as it meets the Greensand Ridge.

**Biodiversity** Rivers and Streams – The River Ouzel offers a route for species dispersal.

Lowland Meadow – There is a concentration of lowland meadows around Stoke Hammond and Bragenham and a further site at Fenny Stratford

Lakes – There are numerous large lakes in the Milton Keynes stretch

of the river. Walton Lake is an LWS, Willen Lake is important for overwintering and breeding birds

Reedbed – Willen Lake contains a small reedbed

Ponds – There are potential BAP ponds in the Stoke Hammond area

Hedgerows – The area around Stoke Hammond contains many pre-18<sup>th</sup> century enclosures and so may contain species rich hedgerows

**Access**

The Ouzel Valley Park is accessible through Milton Keynes. The Grand Union Canal and footpath runs parallel with the River Ouzel south of Milton Keynes.

**Archaeology**

There is ridge and furrow around Stoke Hammond

**Targets**

Rivers & Streams – Management, Restoration

Lowland Meadow –, Restoration, Creation

Eutrophic Standing Water - Management, Restoration, Creation

Ponds - Management, Restoration, Creation

Hedgerows - Management, Restoration, Creation

Fen – Creation

Reedbed – Management, Creation



The Biodiversity Opportunity Areas (BOAs) map depicts the regional priority areas of opportunity for restoration and creation of Biodiversity Action Plan (BAP) habitats. This is a spatial representation of the BAP targets and the BOAs are areas of opportunity, not constraint. The BOAs shown in the map do not include all the BAP habitat in the region, nor do they include all the areas where BAP habitat could exist. In particular, more work is needed to develop approaches in urban and in marine environments.

The Biodiversity Opportunity Areas Map is the property of the members of the South East England Biodiversity Forum. For more information please see [www.sebiodiversity.org.uk](http://www.sebiodiversity.org.uk)