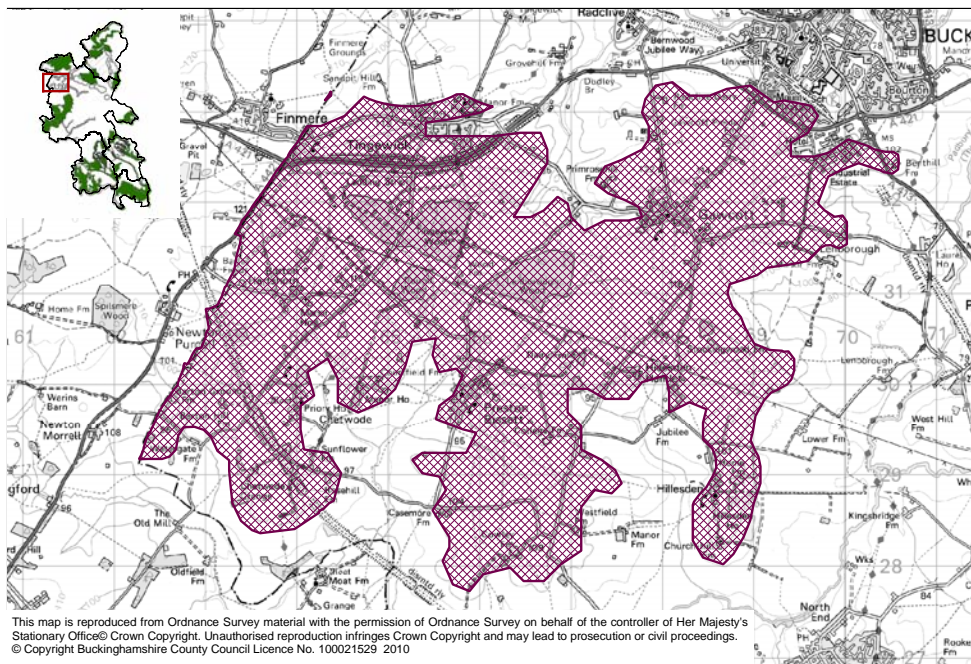


## Tingewick Meadows and Woodlands Local Biodiversity Opportunity Area Statement



<b>Area Coverage</b>	2379ha ha
<b>Number of Designated Sites</b>	Local wildlife sites 7 SSSI 1
<b>BAP Habitat</b>	Lowland Fen 1.5ha Lowland Meadow 12 ha Lowland Mixed Deciduous Woodland 22.5ha

*A lowlying undulating area on the southern flank of the Ouse Valley containing Tingewick Meadows SSSI and LWS meadows and woodlands.*

*This BOA connects with Ouse Valley Local BOA*

**Joint Character Area** Bedfordshire and Cambridgeshire Claylands, Upper Thames Clay Vales

**Landscape Types** Wooded agricultural land.

**Geology** Mostly mudstone, with a band of sandstone and limestone around Tingewick

**Topography** An undulating landscape with a low ridge running east west through Tingewick and Lonborough Woods.

**Biodiversity** Lowland Meadows – Tingewick Meadows SSSI. There are 2 LWSs in the south of the area – Field A Cowley Farm and 2 Meadows West of Chetwode/Barton Hill

Woodland – There are 5 LWS Woodlands accumulated around Barton Hartshorn

Hedgerows – The areas around Barton Hartshorn and west of Gawcott

contain concentrations of pre-18<sup>th</sup> century enclosures and so may contain species rich hedgerows

Ponds – There are several ponds in the area

**Access** Woodland Trust own Round Wood LWS. There is a good network of rights of way.

**Archaeology** There is ridge and furrow in the lower lying areas to the north and south of the ridge around Tingewick, Gawcott, Barton Hartshorn, Preston Bissett and Hilsden.

**Targets** Lowland Fen – Management, Restoration

Lowland Meadows –Management, Restoration, Creation

Woodland - Management, Restoration

Hedgerows – Management, Restoration

Ponds – Management, Restoration, Creation



The Biodiversity Opportunity Areas (BOAs) map depicts the regional priority areas of opportunity for restoration and creation of Biodiversity Action Plan (BAP) habitats. This is a spatial representation of the BAP targets and the BOAs are areas of opportunity, not constraint. The BOAs shown in the map do not include all the BAP habitat in the region, nor do they include all the areas where BAP habitat could exist. In particular, more work is needed to develop approaches in urban and in marine environments.

The Biodiversity Opportunity Areas Map is the property of the members of the South East England Biodiversity Forum. For more information please see [www.sebiodiversity.org.uk](http://www.sebiodiversity.org.uk)