

Brill & Muswell Hill Biodiversity Opportunity Area Statement



| | |
|-----------------------------------|----------------------------------|
| Area Coverage | 922 ha |
| Number of Designated Sites | Local wildlife sites 4 SSSI 1 |
| BAP Habitat | |

*A geologically complex hill rising from the surrounding lowlands of the Bernwood Forest
It lies adjacent to Bernwood BOA.*

| | |
|-----------------------------|---|
| Joint Character Area | Midvale Ridge, a small area is within Upper Thames Clay Vales |
| Landscape Types | Brill Hill is a wooded and farmed chalk outcrop. |
| Geology | Brill Hill and Muswell Hill consist of sandstone capping limestone, with the lower slopes being interbedded sandstone, limestone and mudstone. |
| Topography | Brill and Muswell Hills are very steeply sloping hills (rising up to 185m) rising out of a low flat floodplain. |
| Biodiversity | Woodland – There are a number of small lowland deciduous woodlands in the area. Calcareous Grassland – Brill Common is a matrix of calcareous and acid grasslands Acid Grassland - Brill Common is a matrix of calcareous and acid grasslands Ponds – The area contains many potential BAP habitat ponds including many on the slopes of Brill Hill Hedgerows – There is a good network of hedgerows around pre-18 th century enclosures throughout the area, so many may be species rich. |
| Access | Brill Parish Council own Brill Common. The Bernwood Way starts at Brill and there is a good network of footpaths throughout the area |
| Archeology | There is a scheduled ancient monument at Brill. Part of a much larger Mediaeval Hunting Forest |
| Targets | Woodland – Management, Restoration Lowland Calcareous Grassland – Management, Restoration Lowland Dry Acid Grassland – Management, Restoration Ponds - Management, Restoration, Creation Hedgerows - Management, Restoration, Creation |

| Area of BAP habitat present in BOA (from BCC Integrated Habitat System Mapping 2010) and 2015 Habitat Targets for this BOA | | | |
|---|------------------------------|----------------------------|--------------------------|
| Brill & Muswell Hill BOA | Lowland Calcareous Grassland | Lowland Dry Acid Grassland | Mixed Deciduous Woodland |
| Area of Habitat in BOA (ha) | 0 | 0 | 0 |
| % of BOA Area | 0 | 0 | 0 |
| % of County Resource | 0 | 0 | 0 |
| 2015 BAP Targets | Lowland Calcareous Grassland | Lowland Dry Acid Grassland | Native Woodland |
| Maintenance (ha) | | | 0 |
| Achieving Condition (ha) | | | 0 |
| Restoration (ha) | tbc | tbc | 35.5 |
| Creation (ha) | | | |

Info on resource for other BAP habitats

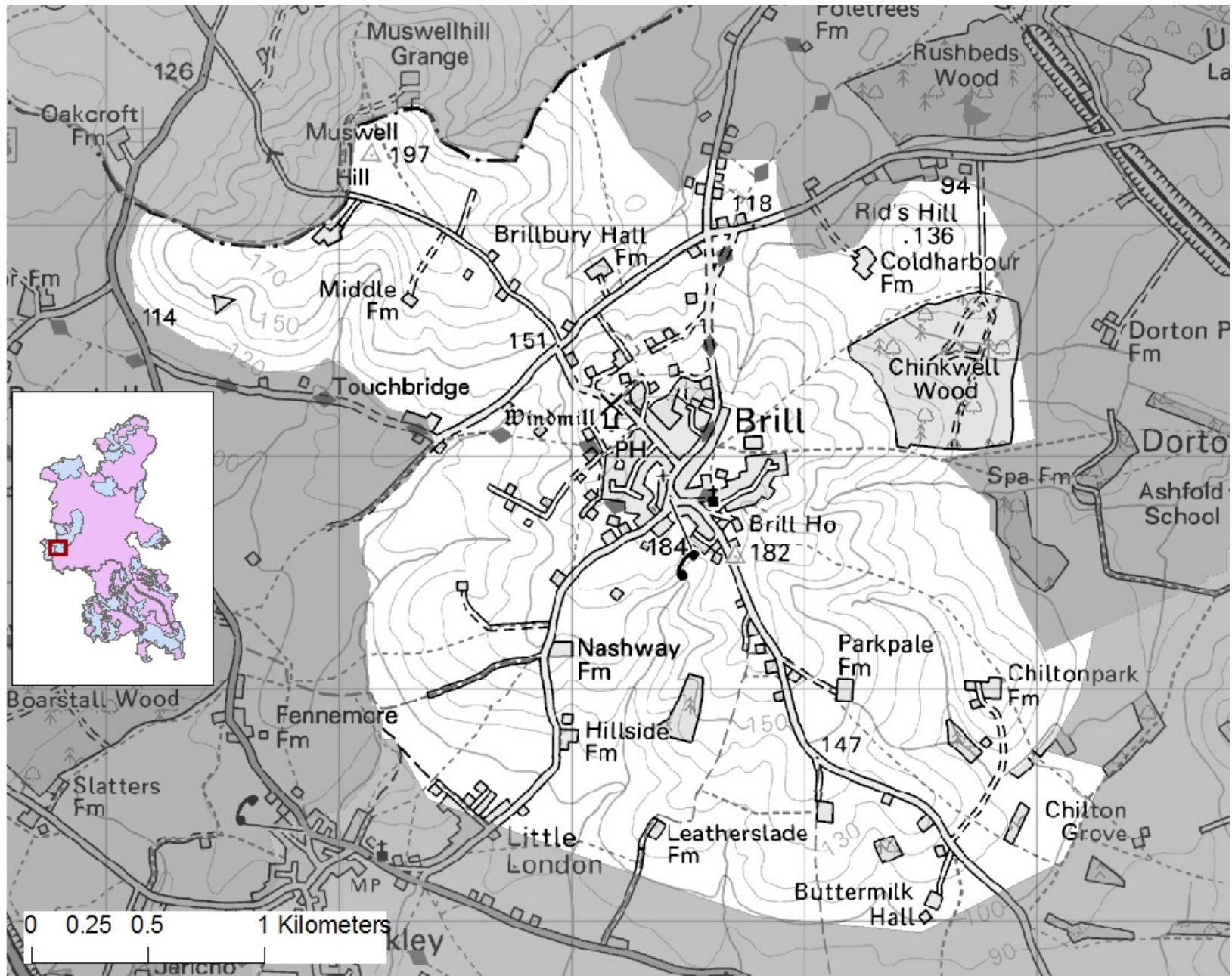
| Arable Field Margins | | Traditional Orchards | | Ponds | | Hedgerows | |
|----------------------------------|--------|--|---|--------------------------|-----|--|----|
| Area of Arable (ha) | 67 | No of Orchards | 0 | No of BAP Priority Ponds | 0 | % of BOA with potential for hedgerows of high-med biodiversity value | 63 |
| % of BOA in arable | 7 | Area of Orchards (ha) | 0 | Creation Target | tbc | % of BOA with potential for hedgerows of med-low biodiversity value | 24 |
| Area of arable in ES (ELS / HLS) | 65 (0) | <i>Data from PTES Traditional Orchards Aerial Photo Survey</i> | | | | <i>Data from BCC Historic Landscape Assessment</i> | |
| % of arable in ES | 97 | | | | | | |

The Biodiversity Opportunity Areas (BOAs) map depicts the regional priority areas of opportunity for restoration and creation of Biodiversity Action Plan (BAP) habitats. This is a spatial representation of the BAP targets and the BOAs are areas of opportunity, not constraint. The BOAs shown in the map do not include all the BAP habitat in the region, nor do they include all the areas where BAP habitat could exist. In particular, more work is needed to develop approaches in urban and in marine environments.

The Biodiversity Opportunity Areas Map is the property of the members of the South East England Biodiversity Forum. For more information please see www.sebiodiversity.org.uk

Priority Habitat Mapping data supplied by Buckinghamshire County Council, Natural Environment Team.
Data is correct of April 2010.

This map is reproduced from Ordnance Survey material with the permission of Ordnance Survey on behalf of the controller of Her Majesty's Stationary Office© Crown Copyright. Unauthorised reproduction infringes Crown Copyright and may lead to prosecution or civil proceedings.
 © Copyright Buckinghamshire County Council Licence No. 100021529 2010



Brill and Muswell Hill BOA Statement December 2010