

Sustainable Community Strategy for Aylesbury Vale 2009–2026



Contents:

The Aylesbury Vale Local Strategic Partnership draws together the work of all the key public sector, business and voluntary partners in the area to deliver the agreed priorities for the district. It is responsible for directing resources and coordinating the work of partners to deliver improved outcomes for residents.

Foreword (from the Aylesbury Vale LSP Chair)	3
Aylesbury Vale in 2009	4 – 5
Our vision for Aylesbury Vale in 2026	6
Summary of key challenges	7
Delivering the vision for 2026	8
Themes, outcomes and cross-cutting themes	10 – 11
o Thriving Economy	12 – 13
o Sustainable Environment	14 – 15
o Safe Communities	16 – 17
o Health and Wellbeing	18 – 19
o Cohesive and Strong Communities	20 – 21
What each one of us can do to make our area a better place	22
Partnership working in Aylesbury Vale	24

Foreword



On behalf of the Aylesbury Vale Local Strategic Partnership (AVLSP) it is my privilege to introduce the Sustainable Community Strategy, which outlines our ambitious vision for Aylesbury Vale in 2026 and the key priorities that need to be addressed in order to achieve that vision. It has been developed by the AVLSP as part of the family of Community Strategies in Buckinghamshire and we have carried out extensive consultation to ensure that it reflects the views of local residents, parish and town councils, business and community based organisations.

As a partnership we are committed to maintaining and improving the local quality of life for all our communities, making use of our collective resources, skills and experience to deliver the objectives and outcomes outlined within this strategy.

To meet the requirements of the South East Plan an additional 21,500 new homes are planned to be built in the district between now and 2026, with an equal number of new jobs. While this will bring many challenges, it can also bring tremendous opportunities for our urban and rural communities, which our Local Strategic Partnership is keen to grasp. In addition to the contribution of the AVLSP partners, everyone who lives and works in the district has an important contribution to make and I would like to take this opportunity to encourage you to join us in working towards our ambitious vision for Aylesbury Vale.

Warren Whyte
Chairman, Aylesbury Vale Local Strategic Partnership

Aylesbury Vale in 2009

Aylesbury Vale is a large district at over 900 square kilometres. We have a population of 176,000 people, about 40 per cent of whom live in the urban area of Aylesbury town with the rest living in rural areas. We have over 100 rural settlements, many with a population of 3,000 or fewer. Of the total population, 20 per cent is under 16, and nearly 19 per cent is 60 or over. Ninety four per cent of the population is white British, with six per cent from black and ethnic minority groups. Much of our ethnic minority population lives in Aylesbury town and in some areas of the town ethnic minority groups represent up to 18 per cent of the population.

By far the biggest challenge facing Aylesbury Vale in 2009 is the number of additional homes and jobs planned for the area. However, this challenge also provides many opportunities for our urban and rural communities which the Local Strategic Partnership is keen to grasp.

A total of 21,500 new homes are planned to be built in the district between now and 2026. Of these, 16,800 will be built around the main urban area of Aylesbury town and 4,700 in the rural areas. An additional 5,390 homes are also planned next to Milton Keynes in the north east of our district. Our population is therefore set to rise from 174,000 to 213,000 people, with over 25 per cent aged over 65.

To support the increase in population and help to create sustainable communities, a target of 21,500 additional jobs in the district has been agreed. At present unemployment in the district is low and the rural areas support a high level of entrepreneurship, which we are keen to maintain and support, particularly through the current economic recession.

As well as planning for the new communities in our district, we must also manage the social, economic and environmental impact that this level of growth will have on our existing

communities. For example, despite the rural nature of our district, and the wealth of historic houses and key historic landscapes, there is a shortage of accessible green space. We aim to address this as part of the Local Development Framework, making the most of the opportunities which growth will bring. We also want to ensure that new and existing communities can be successfully integrated.

While the area has good regional transport links, we need to improve local transport networks and connections to support housing and economic growth in the future. We must improve public transport, provide better linked cycle and walking routes and promote car clubs to support rural communities and reduce car journeys.

Climate change poses a number of threats and opportunities to the area. These include flooding but also, given the scarcity of water in the South East, potential for water shortages.

Carbon emissions are relatively high by South East standards, but compare well against similar rural district authority areas.

The local voluntary and community sector is strong, but needs ongoing support to meet the needs of local people and represent the needs of local communities to the wider public and private sector.

While the rural nature of the district is valued by residents, it poses challenges for communities and service providers. The loss of many rural services creates a risk of high rural isolation and the lack of affordable housing means that families and communities may be separated. We welcome and support the development of the Buckinghamshire Rural Strategy which highlights the particular challenges faced by our rural communities.

Forty per cent of our population lives in Aylesbury town, the county town of

Buckinghamshire. In contrast with our rural communities residents enjoy excellent access to a range of services. The development of a new theatre and the planned Waterside development will further improve the town's retail and leisure facilities for the whole of the district, and beyond.

Using national measures of deprivation, which include levels of crime, income, employment, education, health and living environment, some areas of Aylesbury town are among the most deprived in the county, and the South East region. We aim to address these inequalities.

Crime is relatively low in our district and this makes an important contribution towards residents' satisfaction with the area. Aylesbury Vale has a lower crime rate than the rest of the county and the Thames Valley region.

The health of people in Aylesbury Vale is generally better than the England average

although good health is not shared equally across the population. Residents have healthier lifestyles than the England average but an estimated one in six adults binge drink and one in five adults is obese. Although the death rate from smoking is lower than the England average, smoking continues to account for over 200 deaths a year.

Our vision for Aylesbury Vale in 2026...

Aylesbury Vale is uniquely situated between the Thames Valley and the South Midlands and plays a strategic role as a gateway for growth. The district provides a unique sense of balance and interplay between sustainable rural and urban living and holds opportunities for everyone to participate in their communities and celebrate their history and their identity.

In 2026 Aylesbury Vale will be a place ...

- Where growth is planned to ensure the best outcomes for existing and future residents and businesses, while protecting and enhancing the individuality and natural environment of our rural areas.
- Where infrastructure and services are delivered at the right time, in the right place and in the right way.
- Where new developments are exemplars of excellent design, bring benefits to existing communities and help us adapt to climate change.
- That is an attractive and desirable destination for residents and visitors, with Aylesbury town centre providing high quality retail, leisure and employment for the district and beyond, and Buckingham providing a complementary role.
- Where everyone has access to excellent education, training and life-long learning opportunities.
- Where everyone works together to minimise their impact on the environment.
- That is well connected by road, rail and electronically, within the district and beyond.
- With a well managed network of green infrastructure conserving and enhancing the biodiversity of the area, supporting a range of recreational activities and reducing the risk of flooding.
- With a thriving voluntary and community sector in which all residents of new and established communities get on well and have a strong sense of belonging.
- Where residents feel safe and live healthier, happier and longer lives, with smaller gaps between the most affluent and less well off communities.

Summary of key challenges in 2009

- Our biggest challenge is planning for and managing the impact of growth. This includes the need for infrastructure such as transport and public services; ensuring that new communities integrate with existing communities; and dealing with the social, economic and environmental impact on existing communities. Growth brings exciting opportunities but we will need Government support to ensure it brings benefit and not additional pressure to our community.
- Create the right conditions to enable existing and new local businesses to deliver 21,500 new jobs in the area by 2026 in competition with surrounding areas, while also improving education and skills to meet the needs of those businesses.
- Address inequalities and disadvantage within our communities, especially where these are hidden by relative affluence in our urban and rural communities.
- Support cohesion in our communities and deliver services which are responsive to our changing population, for example, growing numbers of older people.
- Ensure all our residents feel safe and have opportunities to contribute to their community.
- Support our rural and market town communities, especially with affordable homes, transport and accessible services.
- Improve Aylesbury town centre, as a centre for all our local communities.
- Minimise and reduce our collective impact on the environment by pursuing sustainable energy solutions, reducing carbon emissions, reducing waste to landfill, and conserving and enhancing biodiversity.
- Address the full impact of the current national and global economic climate on the local economy. Additional support for individuals, families and local businesses will be required at a time when public service resources are also under immense pressure.
- Improve our joint working within an increasingly complex partnership framework.

Delivering the vision for 2026

This Sustainable Community Strategy is the over-arching long-term plan for Aylesbury Vale. It is not a detailed action plan, but a framework to help partner organisations take collective responsibility, work together and make the best use of resources to deliver the outcomes set out here.

Delivering the vision to 2026 will require determined action by a range of public, private and voluntary sector bodies working in partnership at neighbourhood, district and county level.

We will review this strategy every year to make sure that it continues to reflect local people's views and addresses new challenges as they emerge. As the area's priorities develop and change, the action plans of the partnership and individual partners will change to reflect this. These action plans are set out in a variety of documents including:

- Children and Young People's Plan
- Local Development Framework

- Housing and Homelessness Strategy
- Community Safety Partnership Plan
- Healthy Communities Strategy.

In addition, a number of specific projects and activities will target geographic areas and/or groups of people. These projects and activities will be monitored to ensure they are making a positive difference to people's lives. The outcomes are widely supported by national indicators and local measures, including those already agreed in the Buckinghamshire Local Area Agreement. This will help us compare our performance against other areas in the country.

For more information about the delivery of the vision, visit our website at www.avlsp.org

Buckinghamshire Local Area Agreement

The Buckinghamshire Local Area Agreement is central to the delivery of the family of Sustainable Community Strategies. The Local Area Agreement is led and co-ordinated by the Buckinghamshire Strategic

Partnership. It is a contract between partners in Buckinghamshire and the government to deliver measurable improvements to the quality of life and services for residents over a 3 year period. The agreement consists of an agreed framework of improvement targets which reflect the priorities in the Sustainable Community Strategies.

Links to spatial planning

The ambitions in this strategy cannot be delivered without a direct link to the spatial plans for the area. This is done through the 'Local Development Framework' at the district level. The Local Development Framework sets out planning policy for the district, to 2026. It is closely aligned with the family of Sustainable Community Strategies and these will work together to achieve our vision.



Themes and Outcomes:

Our Sustainable Community Strategy has five broad themes. These reflect the issues that you have told us matter most:

Thriving Economy

Sustainable Environment

Safe Communities

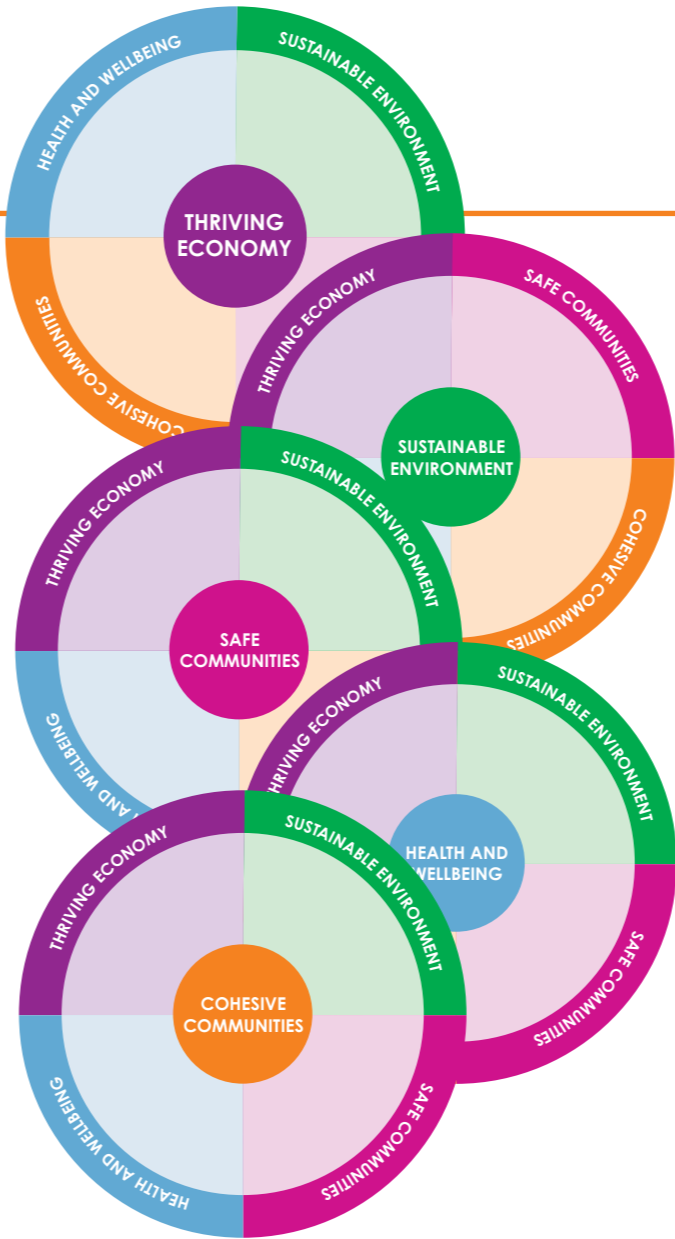
Health and Wellbeing

Cohesive and Strong Communities

For each theme we have identified key outcomes that will improve the quality of life in our district.

Outcomes that are shown in **bold type** are shared aspirations across Buckinghamshire and will be found in the Sustainable Community Strategy for each district area and the county area – making a ‘family’ of plans. The objectives in normal text show where we in Aylesbury Vale need to focus locally – our areas are different and our plans reflect this individuality.

The five themes link and overlap. Therefore, taking action in relation to one theme will often have a positive effect on another theme. For example, tackling crime and anti-social behaviour in a location (Safer Communities) makes the area safer and more attractive for business to invest in (Thriving Economy). *This is illustrated through the ‘wheel’ showing links between the themes*



Cross-cutting Themes

There are also three cross-cutting themes which are central to the Sustainable Community Strategy. These are:
– Responding to demographic change
– Addressing inequalities
– Personal responsibility

Responding to demographic change
The population of Aylesbury Vale will increase due to the substantial growth planned in the area. At the same time the demographics of the area will also alter significantly. For example, we will have more older people. To achieve the outcomes set out in this strategy, we must recognise and plan for the needs of the changing population.

Addressing inequalities
Tackling inequality and disadvantage is crucial if we are to achieve the outcomes set out in the strategy. Our approach must include targeted actions and ways of working which can best address the inequalities experienced by different groups and communities.

Personal responsibility
This is a strategy for the community and cannot be effectively delivered without the support and active involvement of residents. Important examples include improving health through active lifestyles, and creating a sustainable environment through reduced waste and carbon emissions. Please look at page 22 to see how you can help.

Thriving Economy



Aylesbury Vale faces the current challenges of the economic recession as well as the need to plan and support a thriving economy for the future, in particular to support the increased population.

The district has a broad based economy with no obvious specialist strengths or weaknesses. To achieve our jobs growth target we must attract new jobs across a wide range of sectors. We need to create the right conditions for business growth to meet the target of 21,500 new jobs by 2026 in competition with

surrounding areas. Options include maximizing the opportunities that the 2012 Olympics and Paralympics will bring to build on the local tourism industry, and improving the offer of Aylesbury town centre, as the major urban development in the district.

We have more highly skilled residents and fewer lower skilled residents than the English average¹. Educational achievement is generally high², however this is not the same for all our communities and we aim to reduce this gap, tackle under-achievement and ensure that local skills match the needs of local business.

Further education already provides a wide range of vocational skills to meet the needs of the economy.³ For higher education the independent University of Buckingham, in the north of the district, offers a range of degree programmes. In addition, the University Centre

Aylesbury Vale (UCAV) in the south brings together local universities, colleges and training providers to deliver a range of university level courses and professional and vocational qualifications, using the Aylesbury College campus as its focus.

In the short term during the current recession, we expect our progress with housing development and economic growth to be challenging. However as a partnership we must plan for the longer term and expect that demand will return. In the meantime, we can continue to plan for the strategic infrastructure needs of our existing and future communities and lobby for their delivery before some of the new development takes place.

Social housing accounts for about 14 per cent of the total number of households in our

¹ 22.8% of working age people holding a level 4/5 qualification (Level 4 National Vocational Qualification (NVQ) equivalent to higher education qualifications such as HND/HNC diploma, nursing and teaching qualifications and Level 5 NVQ equivalent to degree level qualifications). 11.3% having no qualifications at all.

² The percentage of young people in Aylesbury Vale achieving 5 or more GCSEs (Grade A-C) in 2007 was 64%. This is higher than the South East 55.2%, or the national achievement of 47.3%

³ Aylesbury College makes an annual net contribution of £7.2 million to the economy

“..the entrepreneurial heart of Britain”

district and is managed by housing associations including the Vale of Aylesbury Housing Trust. For the second quarter of 2008/09 the total number on the active housing register was 4,078 households. Few of these are able to afford the rent on a privately owned home

in the district. High property prices and private sector rents in rural areas mean that many people find it difficult to stay in their community. In addition, older residents are more likely to leave a village in order to be closer to services and shops. We aim to take

advantage of the opportunity that comes with the planned growth, to provide affordable homes for local people. We will do this in partnership with housing associations and the new national Homes and Communities Agency, especially in rural areas.

We aim to:

Build business, enterprise and innovation and promote global competitiveness

- Support local business in periods of growth and in difficult times, including rural businesses
- Support families during the recession

Develop skills and employment for the future

- Create job opportunities to match the population growth
- Develop workforce skills, and focus on the type of skills required in the future

Promote an increase in the number of affordable homes to meet local housing need

Support strategic infrastructure requirements

- Including employment land and improvements to transport links

Promote investment in Aylesbury Vale

- Attract inward investment and support new business start-ups
- Promote tourism, especially linked to 2012 Olympic and Paralympic games
- Improve Aylesbury town centre
- Improve the vitality of our market towns



Sustainable Environment



The quality of our natural environment is highly prized. Parts of the south of the district are within the Chilterns Area of Outstanding Natural Beauty, where the conservation and protection of its special character is of prime importance. The district is also home to the internationally renowned park and garden at Stowe and other important historic houses and gardens including Waddesdon Manor and Claydon House, all of which make an important contribution to our local identity and quality of life. We currently have over 100 conservation areas and 2,900 listed buildings. This can present challenges to owners in terms of maintaining and adapting their homes, but also helps to maintain the quality and distinctiveness of the area.

The district provides tremendous development opportunities. Managing these development pressures, while retaining the distinctiveness of our area presents challenges and opportunities. As part of our commitment to the environment we aim to ensure a

renewed focus on biodiversity, which has been maintained and enhanced recently, but will need to be managed alongside the planned growth.

In Aylesbury demand for energy may soon outstrip supply. To tackle this, a consortium has been set up to secure the necessary upgrades by the power suppliers. We are also committed to pursuing renewable energy solutions, particularly for our new development sites. Partners are also working to minimise our collective impact on the environment through reduced carbon emissions and waste, and sustainable energy solutions.

Personal reductions in carbon emissions can be difficult in rural areas particularly as many residents rely on cars. We aim to support local transport solutions that which will support rural communities and help to minimise our carbon footprint. This will include walking and cycling routes for local journeys and improved public transport, including east-west

rail services for longer journeys. In order to support growth improved north south transport links will also be supported.

There are plans for the construction of an 'energy from waste' facility for the county which would provide enough energy for about 20,000 homes. In line with the county-wide

waste strategy, there is a target for 45 per cent recycling and composting by 2010/11 and an aspiration to achieve 60 per cent by 2025.

*“Protecting our heritage,
protecting our future.”*

We aim to:

Tackle climate change

- Reduce carbon emissions through personal and corporate responsibility, and public transport provision
- Find sustainable energy solutions (particularly as part of growth)

Enhance and protect local environment

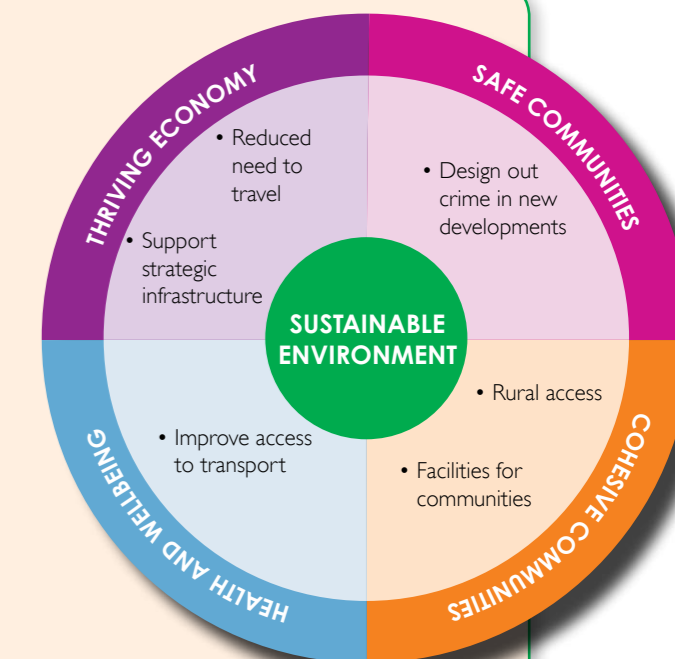
- Minimise the impact of growth on the natural environment and enhance biodiversity where possible (biodiversity, strategic green infrastructure)
- Maintain and improve green spaces in towns and villages

- Maintain and improve the quality of the built environment (street scene, design)
- Maintain and improve the cleanliness of the environment
- Manage local air quality
- Address flood risk

Reduce waste, re-use resources, increase recycling and energy recovery

Efficiently manage and maintain the transport network

- Improve the transport network and manage congestion



Safe Communities



Our district is generally a low crime area.

However, the fear of crime is a consistent concern for residents. In a 2007 survey, 29 per cent of respondents highlighted crime as an issue in need of investment or improvement.

There is a relatively low number of injuries or deaths from fire compared with the rest of England, although the number is higher in vulnerable households.

Road injuries and deaths are higher than the England average - 115 people die or are seriously injured on Aylesbury Vale's roads each year, and the highest risk group is young car drivers.

Although the number of fires and the amount of crime is low, emergency service response times can be longer to remote rural locations.

"Being safe, feeling safe"

We aim to:

Reduce the level of crime and anti-social behaviour

Reduce fear of crime

Reduce the harm caused by alcohol and drug misuse

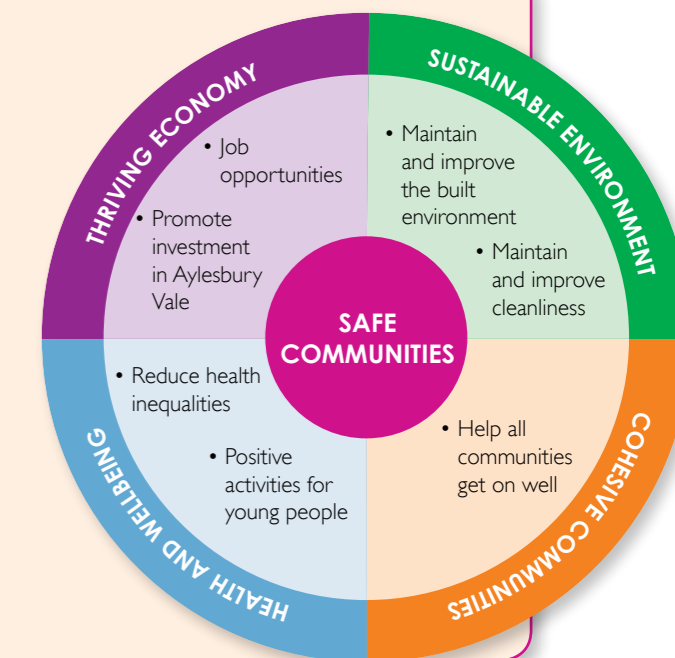
Improve the safety of local people

- Safeguard vulnerable adults and young people
- Reduce the number of fires, and the numbers injured or killed in road collisions

Promote safe development

- Design out crime in residential and business developments

Sustain local resilience to violent extremism



Health and Wellbeing



Our residents are generally healthy and living longer, but there are stark preventable inequalities in health between vulnerable groups and the rest of the population. There are also significant differences in health across different socio-economic groups in the area. While overall deprivation is low, nearly 3,800 children are living in low income households.

Children and young people in Aylesbury Vale are important and valued members of our community and contribute to making it a good place to live. We are committed to helping them all reach their full potential. We will work with the Children and Young People's Trust to improve outcomes for all children and young people by closing the gap between the most advantaged and disadvantaged in our community. We will seek to ensure that children and young people are encouraged and able to take part in decision making about the place where they live.

Rates of early deaths from heart disease and stroke and hospital stays due to alcohol are all lower than the England average. Over the past ten years, deaths from all causes and early deaths from heart disease and stroke have decreased. Life expectancy in men is generally higher than the England average, however men from some less well off areas in Aylesbury town can expect to live three years less than those in more affluent areas.

The forecast increase in the number of older people in our district will mean that we need to provide more housing support. This could be help to enable people to stay in their own home to retain independence, or in assisted living accommodation such as sheltered housing schemes, care homes or 'extra-care'⁴ accommodation.

⁴ Extra care housing is designed with the needs of frailer elderly people in mind and with varying levels of care and support available on site. It comes in many built forms, including blocks of flats, bungalow estates and retirement villages, to rent or to buy. It is a popular choice among elderly people because it can sometimes provide an alternative to a care home.

⁵ Indices of Multiple deprivation – for more information visit www.communities.gov.uk/communities/neighbourhoodrenewal/deprivation/deprivation07/

"Healthier, happier and longer lives"

Overall the rural areas of our district are ranked high nationally for quality of life. However, using national measures of deprivation⁵, many of our rural areas have poor access to services, as villages may not have a

local post office, general store, GP surgery or primary school. Access to transport in rural areas is generally good but much of this is due to car ownership. Access to public transport is poor, and for some villages non-existent.

Health care services in our district are good but access to services can be an issue especially in rural areas. Methods and availability of transport are under review.

We aim to:

Promote healthy lifestyles

- Encourage participation in cultural and sporting activities
- Improve cycling and walking routes across the district and in new developments as part of the green infrastructure
- Reduce the number of smokers
- Reduce obesity
- Promote mental health

Reduce health inequalities

- Support families with budgeting advice
- Target support for groups at risk of heart disease, stroke and diabetes

Improve the quality of life for our ageing population

- Supporting people and extra care housing provision

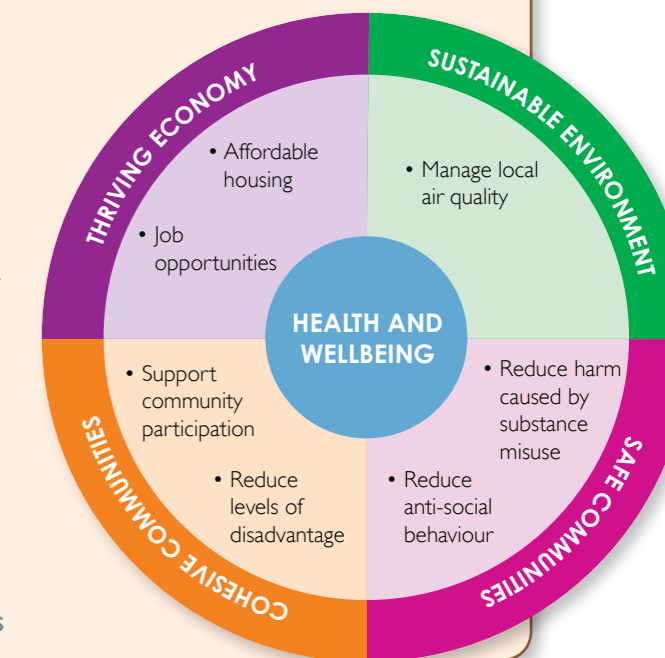
Improve the quality of life for children and young people

- Improve educational achievement, in particular narrowing the gap between the poorest performing schools and the best
- Provide and promote positive activities for young people

Reduce homelessness

Provide well connected communities

- Improve rural transport and access to services



Cohesive and Strong Communities



Across the district 70 per cent of residents agree that people from different backgrounds get on well together, and 25 per cent say that having friendly neighbours is one of the five best things about living in the Vale.

We have a strong voluntary and community sector which provides a range of leisure and support services. There are many ways for residents to get involved in their local community as part of local clubs, community groups, neighbourhood action groups, or parish and town councils.

The area faces challenges in promoting and maintaining a cohesive community within the context of a growing population and changing migration patterns. We aim to support new communities to ensure they have similar opportunities to get involved and to ensure that new and existing communities can be successfully integrated.

“Strong, confident and active communities”

We aim to:

Sustain and grow a thriving voluntary and community sector

- Provide support for community participation and engagement

Increase the confidence of communities

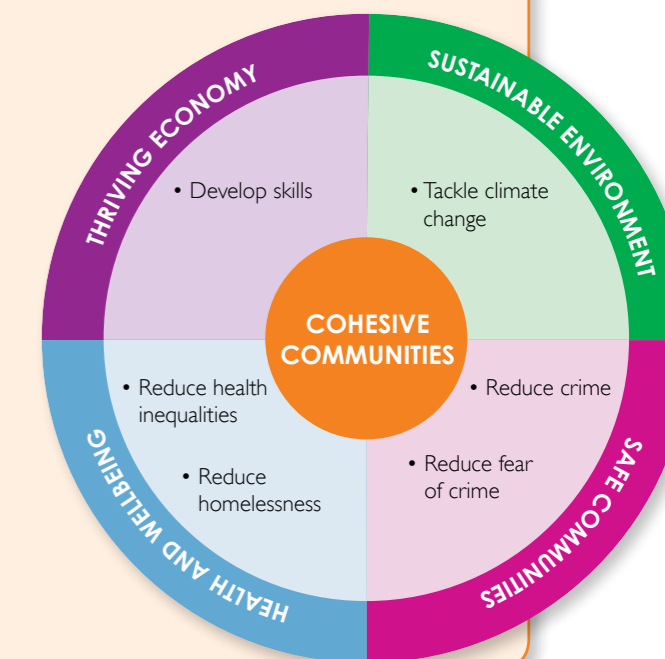
- Support communities to find local solutions to local problems
- Support elected representatives in their community leadership role

Help all communities get on well together

- Improve community cohesion, particularly between new and existing communities
- Provide facilities in new and existing communities, especially for young people

Reduce levels of disadvantage

- Reduce social isolation



What each one of us can do to make our area a better place

We all have a part to play in making Aylesbury Vale a place we identify with and feel proud of.

We recognise that people have rights and responsibilities. Our partnerships will respect and promote those rights, while at the same time encouraging personal responsibility. It is essential for individuals and communities to take positive action if our shared vision is to become a reality, as many improvements will require a combination of partnership work and individual lifestyle changes.

All the Buckinghamshire Local Strategic Partnerships are actively encouraging everyone in their areas to do something to help themselves and their local community, as this will directly help to achieve the outcomes in our Community Strategies. The following examples of individual actions would, if carried out by many people, make a significant contribution.

Could you do at least one new activity from the list to help?

- Take simple crime and fire prevention measures by locking doors and windows, fitting alarms, removing valuables from cars and security marking property.
- Join Neighbourhood Watch or other local watch schemes.
- Fit smoke alarms and regularly check the batteries to make sure the alarms are working.
- Adopt a healthier lifestyle by eat healthily, reducing smoking, and drinking sensibly to improve physical and mental wellbeing
- Try to get at least half an hour of moderate exercise five times a week.
- Recycle as much household waste as possible and try to save energy around your home.
- Look out for neighbours, especially if they are elderly or frail.

- Join a local group or charity as a volunteer (ask a local volunteer centre for information).
- Vote in elections and take part in local democracy.
- Support local shops, producers and businesses.
- Learn a new skill for work or pleasure.
- Walk, cycle or take public transport wherever possible.
- Help to keep your community clean and tidy.

This list is not comprehensive and we encourage individuals and communities to add their own ideas to suit their particular needs.



Partnership working in Aylesbury Vale

For more information on the Aylesbury Vale Local Strategic Partnership:

Local Strategic Partnership:

Please see the Aylesbury Vale LSP website, www.avlsp.org for regular updates on our progress

For general queries, please email isp@aylesburyvaledc.gov.uk telephone **01296 585003** or write to :

Aylesbury Vale Local Strategic Partnership,
c/o Aylesbury Vale District Council,
The Gateway,
Gatehouse Road,
Aylesbury,
Buckinghamshire,
HP19 8AA.

For regular news on issues affecting the County-level Bucks Strategic Partnership, visit their website www.bucksisp.org.uk or subscribe to their electronic magazine, 'Buckinghamshire Together' on www.buckinghamshiretogether.org.uk

The Aylesbury Vale Local Strategic Partnership includes representatives from:

- o Aylesbury Vale Advantage
- o Aylesbury Vale District Council
- o Aylesbury Vale's Parish Councils
- o Aylesbury Vale's Town Councils
- o Buckinghamshire County Council
- o Buckinghamshire Fire and Rescue Service
- o Buckinghamshire Primary Care Trust
- o Thames Valley Police
- o The local business sector (Buckingham Business Club)
- o The local housing sector (Vale of Aylesbury Housing Trust)
- o The local rural/environment sector (Buckinghamshire Community Action)
- o The local skills/learning sector (Aylesbury College)
- o The local voluntary and community sector (Vale Volunteers)





If you would like this document in another format, larger print, or if you require the services of an interpreter, please contact us.

یہ دستاویز اگر آپ کو کسی دیگر زبان یا دیگر شکل میں درکار ہو، یا اگر آپ کو ترجمان کی خدمات چاہئیں تو برائے مہربانی ہم سے رابطہ کیجئے۔

本文件可以翻译为另一语文版本，或制作成另一格式，如有此需要，或需要传译员的协助，请与我们联系。

Jeżeli chcieliby Państwo otrzymać ten dokument w innym języku lub w innym formacie albo jeżeli potrzebna jest pomoc tłumacza, to prosimy o kontakt z nami.

For general queries:

email lsp@aylesburyvaledc.gov.uk

website www.avlsp.org

telephone **01296 585003**

or write to us at:

Aylesbury Vale Local Strategic Partnership,
c/o Aylesbury Vale District Council,
The Gateway,
Gatehouse Road,
Aylesbury,
Buckinghamshire,
HP19 8AA.

Aylesbury
Vale *local strategic
partnership*

BUCKS STRATEGIC
PARTNERSHIP

promoting prosperity, tackling inequalities