

# Sustainable community strategy for the Chiltern District 2009–2026



# Contents:

The Chiltern Community Partnership draws together the work of the key public sector, business and voluntary partners in the area to deliver the agreed priorities for the District. It is responsible for directing resources and co-ordinating the work of partners to deliver improved outcomes for residents.

Foreword (Introduction from the LSP Chairman)	3
Chiltern District in 2009	4 – 9
Our vision for Chiltern in 2026	10
Summary of key challenges in 2009	11
Delivering the vision for 2026	12
Themes, outcomes and cross-cutting themes	14 – 15
o Thriving Economy	16 – 17
o Sustainable Environment	18 – 19
o Safe Communities	20 – 21
o Health and Wellbeing	22 – 23
o Cohesive and Strong Communities	24 – 25
What each one of us can do to make our area a better place	26
Partnership working in Buckinghamshire	27

# Foreword from the Chairman

Welcome to the latest Chiltern Sustainable Community Strategy. I believe this strategy provides a comprehensive description of the Chiltern District in 2009 and our partnership's shared challenges and priorities. The strategy has moved on significantly and I would like to thank our previous Chairman Doug Ebdon for his dedication and commitment. I, like many, have valued his inclusivity and objectivity which has made for a strong and more robust document.

This strategy takes the partnership into new areas and raises difficult issues and questions. The economic recession and constraints on public finance will require hard choices. The partnership has made good progress in recent years. Residents' satisfaction with the District is even higher and I'm confident we have the commitment and capability to meet new challenges.

As Leader of the Council I recognise we are central to the partnership and have a community leadership and statutory role to bring partners together to the benefit of the community. The Council supports this strategy entirely and will continue to play its role in co-ordinating partners and engaging the community. It is now important to convert this strategy to actions and outcomes.

On behalf of the partnership I would like to pay tribute to the broad range of positive activities undertaken by all sectors and people in Chiltern. This includes the community leadership displayed by both elected and unelected people, the commitment and dedication shown by community and revitalisation groups, the high level of volunteering and the role of positive activities such as sports and the arts. This work and activity will help to

achieve our outcomes and bring us closer to our vision for Chiltern.

**Cllr John Warder**

Leader of Chiltern District Council and  
Chairman of the Chiltern Community  
Partnership



# Chiltern District in 2009

Most of Chiltern District lies within an Area of Outstanding Natural Beauty with its towns and villages set in the Chiltern Hills. While most of our residents live in the settlements of Amersham, Chesham and Chalfont St Peter, there are many picturesque villages dotted around a mainly rural landscape. Chiltern is located to the North West of London in the County of Buckinghamshire and is within easy reach of the capital. We are surrounded by South Bucks District to the south, Wycombe District to the west, Aylesbury Vale to the north and Dacorum and Three Rivers to the east.

Our residents largely enjoy a high quality of life and a recent survey rated Chiltern as having the best quality of life among rural districts in England.

## **Countryside of national importance**

The high quality countryside is of national importance and 72 percent of Chiltern is designated as an Area of Outstanding Natural Beauty. The countryside has rolling farmland with ancient hedgerows, beech woods and

chalk streams such as the River Chess and River Misbourne. The District also has a significant historic and cultural heritage, including 20 conservation areas and about 1,100 listed buildings. Eighty eight percent of the District lies within the Metropolitan Green Belt so much of it is environmentally protected. This has resulted in more intensive development of the urban areas to protect the countryside.

## **Development pressure**

Chiltern has a requirement to build 2,900 homes between 2006 and 2026, at an average rate of 145 a year. Following consultation, the Council proposes to concentrate new development in the three main settlements of Amersham, Chesham and Chalfont St Peter. This will help conserve the attractive qualities of the District, limit change to the green belt and enable higher levels of affordable housing. Managing the impact of both rural and urban development on the quality of the environment remains a challenge for Chiltern. There will also be further pressure on the District because of development taking place

in neighbouring areas. The Government's Sustainable Communities Plan is resulting in significant growth in the north of the County as part of the Milton Keynes/South Midlands growth area. These factors may significantly increase commuter activity through the District.

## **Our impact on the environment**

Chiltern's residents are keen recyclers and for a number of years have topped the table for recycling. However, we are responsible for high levels of carbon dioxide emissions, and use a lot of gas, electricity and water. In 2004, Chiltern had the fourth highest carbon footprint per person (tonnes of CO<sub>2</sub>) of all England's local authority district areas. Helping and encouraging our residents to minimise their impact on the environment is particularly important for us.

## **Changing demography**

Chiltern currently has a population of about 90,900. By 2026, this is likely to reduce by just two per cent. However, our community is expected to age considerably. Chiltern's

population is currently slightly older than that of Buckinghamshire as a whole (19 per cent are over 65 in Chiltern compared to 16 per cent in Buckinghamshire) and the proportion of older people is set to grow at a faster rate in Chiltern than in Buckinghamshire. The proportion of people aged over 65 is projected to increase by 36 per cent (6,100 extra people) between 2009 and 2026 and by 41 per cent for those aged over 80 (2,000 extra people). At the same time, an eight per cent reduction in the 18-64 population, and a 17 per cent reduction in the 0-17 population are forecast. These changes will place an increasing demand on health, social care and housing for the elderly. With an increasingly active 'third age' population, policies and services, such as leisure, libraries and adult education, will also have to change and adapt.

The District has a relatively small black and ethnic minority population (BME), which at 4.5 per cent compares to 9.1 per cent for England as a whole (2001 Census). Although this represents a small proportion of the

population, the Office of National Statistics estimates that by 2006, the proportion of BME groups had grown to 7.8 per cent.

### Children and young people

Children and young people in Chiltern are important and valued members of our community and contribute to making it a good place to live. When asked what was important to them, children and young people told us:

- It is important that people listen to them and take their views into account.
- There should be support for those who need it most.
- They need support when their life circumstances change, for example moving up to secondary school or when family arrangements change.
- Bullying is a concern.
- Fast traffic is a concern.
- Support for families should be provided in a sensitive and non-interfering way.
- They would like improvements to play, youth and leisure facilities, and more information about activities they can take part in.

- They would like advice on sexual health and substance abuse.

### Chiltern's communities

Chiltern has cohesive communities with a strong community spirit, high levels of volunteering and active community groups. Statistics show that Chiltern's society, like much of Britain, is becoming more diverse, so it is important that we maintain the cohesiveness of our communities and help people to live together. For our shared vision to become a reality, many improvements will need both partnership work and positive lifestyle choices. Our Partnership respects and promotes the rights of individuals and encourages personal responsibility.

There is a long history of conformist and non-conformist faith communities in Chiltern over the past 1,000 years which continues to this day. Currently, there are many churches across the District and a large mosque in Chesham, which draws people from a wide area. People from all the faith communities make significant

## Chiltern District in 2009 continued

positive contributions to local life and well-being, often leading activities which support residents, encourage community spirit and create a sense of personal responsibility. In particular, many run a range of activities for young people inside and outside school, and many of the holiday schemes are church-led.

Residents tell us that they feel Chiltern is an area where people from different backgrounds get on well together. However, residents' two main concerns with respect to anti-social behaviour are:

- teenagers hanging around the streets; and
- rubbish and litter.

Another concern raised is that more people in Chiltern feel they cannot influence local decisions than those who feel they can.

Crime levels are comparatively low in Chiltern. However, there are times when acquisitive crime increases, mainly caused by offenders travelling into the District from other areas. The fear of crime in Chiltern is greater than

actual crime levels and this may be because we have a relatively large elderly population. It is important that the Chiltern Partnership maintains community cohesion by ensuring strong engagement and a good understanding of local communities.

### Health, wellbeing and deprivation

Chiltern is a pleasant place to live but there is much to be done to address the deprivation found in small pockets in the District. Our population is comparatively healthy with life expectancy significantly above the national average, but there are differences in health between the most and least disadvantaged. Life expectancy in Chiltern in the most deprived 20 per cent of the population is 5.4 years shorter than the most affluent 20 per cent and there is a significant level of preventable disease.

A recent survey found that Chiltern has the highest proportion of people who earn on average around £54,000 a year, consume more than twice as much wine as the average Briton,

visit restaurants more frequently, buy organic food, exercise regularly and don't smoke. These people are generally healthy, but high food and alcohol consumption are still putting their future health at risk.

### Wealth, economy and skills

Historically, the Chiltern economy has been healthy and the residential working population enjoys the highest average annual salary of any rural local authority in the country. The District has a highly qualified and highly paid workforce in mainly managerial and professional jobs. Education is of a high standard and there is a high demand for schooling in Buckinghamshire. We have one of the lowest unemployment rates (3.3 per cent) when compared with the South East (4.2 per cent) and England (5.2 per cent). While 20 per cent (compared with 24 per cent nationally) of the working population has no qualifications, or fewer than five GCSEs, this still remains an area targeted for improvement. Chiltern District has a higher overall volume (91 per cent) of micro-businesses than the county, regional or national averages.

<sup>1</sup> Population projections provided by Buckinghamshire County Council using summer 2007 projections. Changes in population are shown from 2009.

The current economic recession threatens Chiltern's economy, particularly because many residents rely on London-based salaries and its businesses are predominantly in the small business sector. The recession is already being felt in Chiltern with increases in job seeker's allowance and benefits claimants. The Partnership will seek, as a priority, to support the local economy and people affected by the recession.

### **Affordability**

Chiltern's level of affluence, its popularity as a place to live and the limited availability of land for development, means that house prices are among the highest in the country. Demand for affordable housing is greater than supply and the difficulty in recruiting key workers is made worse by the higher wages paid in London. In addition, our affluent population's ability to pay means the cost of goods and services is higher than other areas. These factors create financial problems for essential workers, those in lower paid employment and those living on state benefits.

### **Transport, infrastructure & accessible services**

The three main settlements in the District all have good rail and road links to London and many people commute to work in or near the capital. The bus links between the main urban areas are good, but residents are concerned about the availability of public transport in rural areas.

Access to services is more limited across much of rural Chiltern, and this is made worse by the limited availability of public transport. Chiltern has high car ownership and high levels of commuter traffic. This puts pressure on local roads causing congestion, particularly during the morning and evening. Car use is forecast to increase and addressing issues such as congestion and road maintenance will become even more challenging.

### **Our residents' priorities**

A large majority of our residents believe that Chiltern is a nice place to live and say that conserving the attractive qualities of

the District, including its natural and cultural heritage, is a high priority.

Chiltern residents said that the four most important factors which make somewhere a good place to live are:

- a low level of crime;
- good health services;
- good education provision; and
- clean streets.

They said that the two least important are:

- race relations; and
- facilities for young children.

Chiltern residents said the following were most in need of improvement:

- road and pavement repairs;
- activities for teenagers;
- the level of traffic congestion; and
- public transport.

## Chiltern District in 2009 continued

They said that the following were least in need of improvement:

- access to nature;
- education provision; and
- race relations.

### The main settlements in Chiltern

Chiltern is not the same across all of its settlements and this is reflected in the Chiltern Community Partnership's active support for Town and Parish Councils and locally based revitalisation and community groups. Chiltern's settlements have distinct features which influence the approach taken in each area.

### Chesham

Chesham is the largest settlement in the District and has a strong industrial heritage. The town centre was pedestrianised in the early 1990s and is one of our two largest shopping centres. It includes our second and third largest supermarkets and our only theatre, making the town a retail and leisure destination. Much of the historic town centre, including most of the shopping area, is a

conservation area. The Chesham Campus of the Amersham and Wycombe College is close to the northern edge of the town.

Chesham has a larger black and ethnic minority community than the average for Chiltern and a thriving Pakistani community making up nearly ten per cent of the 20,000 population.

Chesham also differs from much of the District in that it is dominated by smaller, more modest homes with fewer detached and owner occupied housing than the Chiltern average and higher proportions of social rented accommodation. Some of Chiltern's most deprived wards are found in north-central Chesham.

### Amersham

The urban area of Amersham is made up of four distinct settlements:

- The historic market town of old Amersham lies in the Misbourne Valley. It is mainly a conservation area with over 150 listed

buildings and a small retail centre with many specialist shops, pubs and restaurants. The District's largest supermarket and some minor business/commercial premises are next to the centre.

- Amersham-on the-Hill grew up from the opening of the Metropolitan Railway. It has one of our main shopping centres with civic buildings and offices on the edge of the town centre. Although much of the town is largely residential, there are a number of employment areas, mainly on the outskirts of the town. The Amersham Campus and Sixth Form centre of the Amersham and Wycombe College is off Stanley Hill on the east side of the town.
- Chesham Bois has a traditional village centre, now a conservation area, and a historic open common area. In recent times, it has expanded and merged with Amersham-on-the Hill.
- Little Chalfont grew up around the railway station. The Metropolitan railway came

to Little Chalfont in 1889, with land released for housing in the 1920s when the settlement began to take shape. Further expansion occurred in the 1960/70s to form the settlement as it is today. There is a shopping centre, mainly used by local people, and the District's biggest employer, GE Healthcare, has several large sites throughout the area.

### **Chalfont St Peter**

Chalfont St Peter, built around the River Misbourne, is an ancient community first mentioned in an Anglo-Saxon charter in 949 AD, but with traces of earlier Iron Age and Roman habitation.

In the 1900s, with the coming of the railway, Gerrards Cross was formed from a part of Chalfont St Peter. Chalfont St Peter then developed rapidly from a small village of 1,753 people in 1901 to about 13,000 today.

The village lost many medieval and old buildings when it was developed in the 1960s, but still has a number of listed buildings

dating back to the 16th century, including two coaching inns. The Grange, which for nearly 350 years was the medieval manor and court of Missenden Abbey, is at the centre of the village.

The village is defined by its open spaces - the commons of Austenwood, Gold Hill, Chalfont Common and Chalfont Park, which runs into the Colne Valley Park. A small shopping centre at the heart of the village is used mainly by local and nearby residents.

### **Chiltern's villages**

Chiltern has villages of historical significance with cultural attractions set in beautiful countryside. Many of the villages have active community and revitalisation groups whose essential work to support the vibrancy and uniqueness of our District is supported by the Chiltern Community Partnership. It is important for our villages to remain viable places for people to live and that the partnership addresses their local needs.



## Our vision for Chiltern in 2026...

- A place with integrated, supportive and capable communities that promote active citizenship
- A place where high quality services and facilities help people from all sections of the community, particularly the young, elderly and disadvantaged, to live independent and fulfilling lives
- A place where we can lead safe lives free from the fear of crime and anti-social behaviour
- A place with attractive and vibrant town and village centres and an outstanding countryside
- A place that promotes equality of opportunity and ensures fair access to services
- A place that encourages local employers and small businesses so we can protect the area's economy for the future and achieve a better balance between the jobs available and the people to fill them
- A place where people have the skills, knowledge and ability to make effective decisions and healthy lifestyle choices
- A place with enough affordable housing to meet local needs and maintain our services and communities
- A place with effective and targeted transport solutions, including a well maintained transport infrastructure
- A place where high quality education and lifelong learning improves people's lives, enabling them to make well-informed decisions and play their full part in the community
- A place with a wide range of accessible leisure opportunities
- A place with a clean and green environment where recycling, waste minimisation and resource conservation are an established part of everyday life

# Summary of key challenges in 2009

The key challenges in Chiltern are to maintain an exceptionally high quality of life in the face of changes impacting on the District, a period of reduced resources and high customer expectations. More specifically for Chiltern they are:

- Supporting the economy, business and people in the economic recession
- Anticipating and meeting the needs of an ageing population
- Improving delivery and access to affordable housing
- Managing development pressures on the urban and rural environment and preserving the District's natural and cultural heritage valued by our residents
- Reducing our impact on the environment in terms of emissions of carbon dioxide and consumption of natural resources
- Addressing deprivation and health inequality
- Encouraging and supporting healthy lifestyles
- Managing road congestion and maintaining the transport network
- Improving public and community transport and enhancing sustainable access to goods and services, particularly in the rural areas
- Maintaining strong, safe and cohesive communities
- Promoting tolerance and understanding between generations
- Promoting positive activities for teenagers
- Understanding and managing the impact of growth in the north of Buckinghamshire
- Informing residents about public services
- Enabling residents to influence local decisions and their area
- Encouraging and supporting our residents to contribute towards achievement of our shared vision

# Delivering the vision for 2026

This Sustainable Community Strategy is the over-arching long-term plan for the Chiltern District. It is not a detailed action plan, but a framework to help partner organisations take collective responsibility, work together and make the best use of resources to deliver the outcomes set out here.

Delivering the vision to 2026 will require determined action by a range of public, private and voluntary sector bodies working in partnership at neighbourhood, District and County level.

We will review this strategy every year to make sure that it continues to reflect local people's views and addresses new challenges as they emerge. As the area's priorities develop and change, the action plans of the partnership and individual partners will change to reflect this.

These action plans are set out in a variety of documents, including:

- Local Development Framework
- Community Cohesion Plan

- Housing and Homelessness Strategies
- Community Safety Partnership Plan
- Healthy Communities Strategy.

In addition, a number of specific projects and activities will target geographic areas and/or groups of people. These projects and activities will be monitored to ensure they are making a positive difference to people's lives.

The outcomes are widely supported by national indicators and local measures, including those already agreed in the Buckinghamshire Local Area Agreement. This will help us compare our performance against other areas in the country.

For more information about the delivery of the vision, visit our website at [www.chiltern.gov.uk/chilternpartnership](http://www.chiltern.gov.uk/chilternpartnership)

## **Buckinghamshire Local Area Agreement**

The Buckinghamshire Local Area Agreement is central to the delivery of the family of Sustainable Community Strategies.

The Local Area Agreement is led and co-ordinated by the Bucks Strategic Partnership. It is a contract between partners in Buckinghamshire and the government to deliver measurable improvements to the quality of life and services for residents over a three year period. The agreement consists of a framework of improvement targets which reflect the priorities in the Sustainable Community Strategies.

## **Links to spatial planning**

The ambitions in this strategy cannot be achieved without a direct link to the spatial plans for the area. This is done through 'Local Development Frameworks' at District level. Local Development Frameworks are a new kind of planning framework and set out planning policy for each District, and for the County overall to 2026. They are closely aligned with the family of Sustainable Community Strategies and these will work together to achieve our vision.



# Themes and Outcomes

This Sustainable Community Strategy has five broad themes. These reflect the issues that you have told us matter most.

**Thriving  
Economy**

**Sustainable  
Environment**

**Safe  
Communities**

**Health and  
Wellbeing**

**Cohesive and Strong  
Communities**

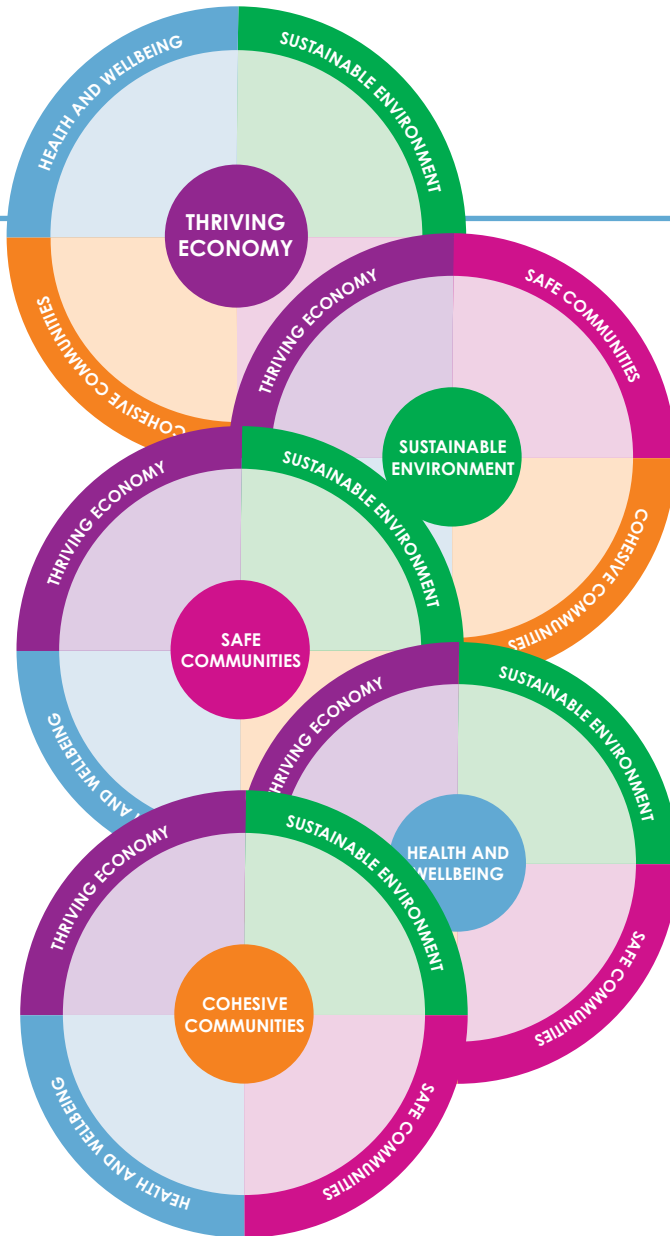
For each theme we have identified key outcomes that will improve the quality of life in our District.

Outcomes shown in **bold type** are shared aspirations across Buckinghamshire and will be found in the Sustainable Community Strategy for each District area and the County – making a ‘family’ of plans.

The outcomes in normal text show where the Chiltern Community Partnership needs to focus locally. Each of our areas is different and the District plans reflect this.

The five themes link and overlap. Therefore, taking action in relation to one theme will often have a positive effect on another theme. For example, tackling crime and anti-social behaviour (Safer Communities) makes the area safer and more attractive for business to invest in (Thriving Economy). This is illustrated through the ‘wheel’ showing links between the themes.

# Cross-cutting themes



There are also three cross-cutting themes which are central to the Sustainable Community Strategy. These are:

- Responding to demographic change
- Addressing inequalities
- Encouraging personal responsibility

To meet the vision for 2026, these cross-cutting themes must be fully considered when developing action plans.

## Responding to demographic change

In Chiltern, the total population is likely to remain relatively static but the proportion of older people, particularly the over 80s, is set to grow at a faster rate than for Buckinghamshire as a whole. Reductions in the 18-64 and 0-17 populations are also forecast. The population of Buckinghamshire will increase due to the substantial growth in the north of the County and at the same time the proportion of older people in the south

of the county will grow. We need to recognise and plan for these changes if we are to achieve the outcomes set out in this strategy.

## Addressing inequalities

Tackling disadvantage is crucial if we are to achieve the outcomes set out in the strategy. Our approach must include targeted actions and ways of working which best address the inequalities experienced by different groups and communities.

## Personal responsibility

This is a strategy for the community and cannot be effectively delivered without the support and active involvement of residents. Important examples include improving health through active lifestyles, and creating a sustainable environment through reduced waste and carbon emissions. Please look at page 26 to see how you can help.

# Thriving Economy

*“Lifelong enterprise”*



The economic recession is a key challenge for Chiltern’s economy. We are particularly vulnerable due to our comparatively high number of small businesses that are struggling to get credit and face uncertain demand. Chiltern also has a significant number of residents with salaries dependent on the success of the London economy.

A lack of affordable housing makes it difficult to recruit workers essential to the vitality and functioning of communities and this is made worse by the higher public sector wages paid in London. To remain competitive, our workforce needs to develop skills which meet the requirements of the economy into the future. Our education, skills and learning institutions must support this aim.

In addition, as Chiltern’s elderly population increases, some people may need support to remain in employment for longer should they wish or need to do so.

Finally, Chiltern, like many other areas, faces increasing congestion which is also detrimental to the functioning of our economy.

## “..the entrepreneurial heart of Britain”

### We aim to:

#### **Build business, enterprise and innovation and promote global competitiveness**

- Increase access to support and advice for residents, local business and entrepreneurs during the recession and beyond
- Improve business start-up and survival rates
- Buy more products and services locally
- Increase opportunities for flexible working

#### **Develop skills and employment for the future**

- Maintain employment levels
- Improve the skills of the workforce and residents to better match and support the needs of the local economy, now and into the future

#### **Increase affordable housing**

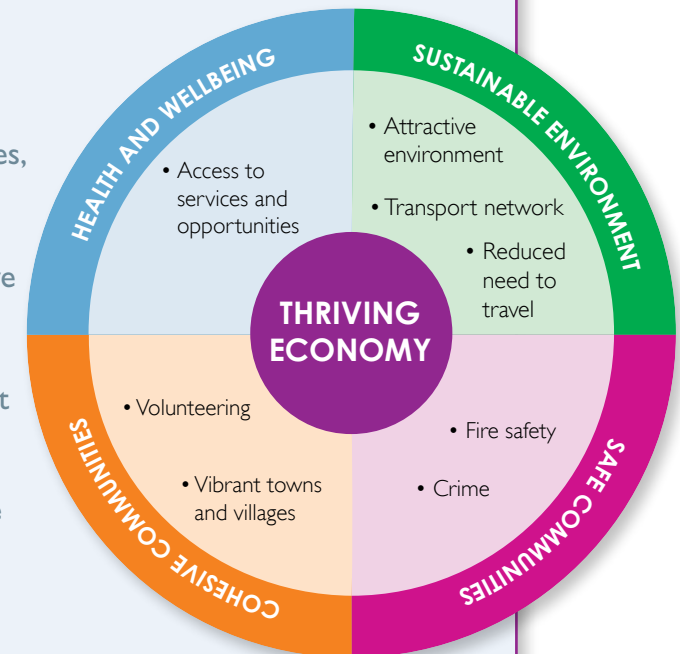
- Provide more affordable homes for local people and essential workers

#### **Support strategic infrastructure requirements**

- Maintain the amount of employment land (land used by business and industry for offices, warehousing and technology parks etc) and encourage its most efficient use
- Increased journey time reliability and improve transport connections to local employment centres in a sustainable way
- Efficiently manage and maintain the transport network

#### **Promote investment in Buckinghamshire**

- Improved vitality and viability of town and village centres



**Bold** – shared aim across Buckinghamshire ○ – area focus in the Chiltern District

# Sustainable Environment



Residents value Chiltern's outstanding natural environment and buildings of cultural value and historical significance. However, there are tensions between development requirements and the quality and character of our natural and urban areas.

As an area Chiltern is responsible for higher levels of carbon emissions and greater use of gas, electricity and water than many other districts.

Residents are dissatisfied with the condition of our roads.

Finally, Chiltern is a clean District but we must maintain partnership working to suppress fly-tipping.

*“Protecting our heritage,  
protecting our future.”*

## We aim to:

### **Tackle climate change**

- Reduced the carbon footprint and use of natural resources
- Adapt to the effects of climate change and mitigate the causes

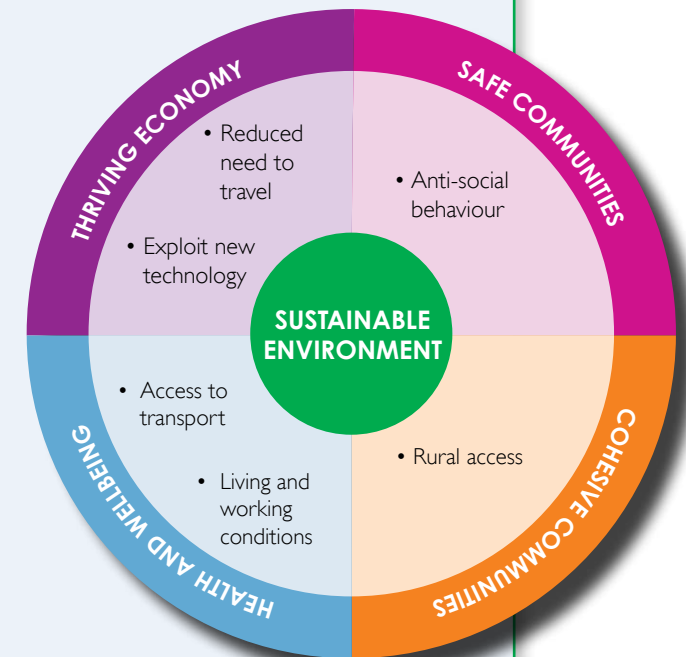
### **Enhance and protect local environment**

- Continue to conserve and enhance the natural and built environment, in particular the Area of Outstanding Natural Beauty and our cultural and historical assets
- Positively manage development pressures in the District and mitigate the impact of development outside the District
- Continue to work with partners to tackle fly-tipping and maintain a litter free District

### **Reduce waste, reuse resources, increase recycling and energy recovery**

### **Efficiently manage and maintain the transport network**

- Improve the conditions of our roads and pavements



**Bold** – shared aim across Buckinghamshire ○ – area focus in the Chiltern District

# Safe Communities



Residents tell us that a low level of crime is the most important factor in making somewhere a good place to live.

Chiltern is a safe place to live but the fear of crime in Chiltern is greater than actual levels of crime.

Much crime in the District is committed by offenders travelling from other parts of the region and this requires partnership working both within our District and across much larger geographic areas.

We also need to address:

- a general lack of knowledge in our communities about what to do in a large scale emergency;
- the need to further improve road safety; and
- public confidence in the police and local council to deal with crime and anti-social behaviour.

## “Being safe, feeling safe”

### We aim to:

#### **Reduce crime and anti-social behaviour**

- Reduce serious acquisitive crime and violent crime in our communities
- Reduce anti-social behaviour in our communities
- Develop wider partnerships and co-operation across larger geographic areas

#### **Reduce fear of crime**

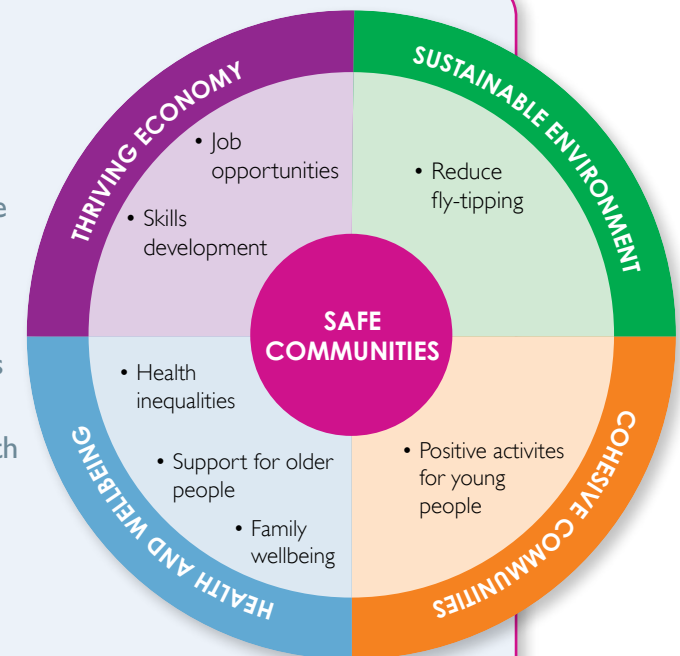
- Improve engagement and communication with local communities to reduce the fear of crime and increase confidence in the public sector

#### **Reduce the harms caused by alcohol and drugs**

- Reduce the harm that drug and alcohol misuse causes within our communities

#### **Improve the safety of local people**

- Improve actions to safeguard vulnerable adults and young people
- Improve road safety to reduce the risk of death or injury from transport incidents
- Increased awareness of what to do in a large scale emergency



**Bold** – shared aim across Buckinghamshire ○ – area focus in the Chiltern District

# Health and Wellbeing



To ensure the future health of our population, we must respond positively to the needs of our ageing population, reduce health inequalities across our District and promote healthy lifestyles generally.

Elderly people need greater levels of support to help them remain independent and enjoy well-being in later life. Part of the solution involves supporting and advising people so they can make the best possible choices for their well-being.

There are health inequalities in Chiltern and marked differences in life expectancy between our most and least deprived wards. In addition, although our population is generally healthy, some residents make unhealthy lifestyles choices such as high food and alcohol consumption, putting their future health at risk. Secure and decent homes are also essential to health and well-being as is improved accessibility to services, particularly in rural areas.



## We aim to:

### Promote healthy lifestyles

For residents to live healthier, longer, happier lives

- Reduce obesity
- Increase participation in physical activities
- Improve mental health
- Reduce the number of smokers
- Reduce the number of increasing risk and high risk drinkers

### Reduce health inequalities

Reduced deprivation and health inequality between different areas and groups of people

- Ensure homes are of an acceptable and decent standard
- Reduce fuel poverty, particularly for the elderly
- Reduce heart disease, diabetes and stroke in the most 'at risk' groups
- Reduce social isolation

## “Healthier, happier and longer lives”

### **Improve quality of life for an ageing population**

Support for Chiltern’s ageing population and helping people take care of themselves and live independent lives

- Help people stay in their homes for longer
- Improve the support for carers
- Support families with budgeting advice
- Provide ‘extra care’ housing (self-contained homes with access to care and services) to enable more older and vulnerable people to live independently for longer

### **Improve quality of life for children and young people**

Improve support and wellbeing for all children and young people

- Close the gap between the most advantaged and disadvantaged children and young people
- Help children and young people to realise their potential

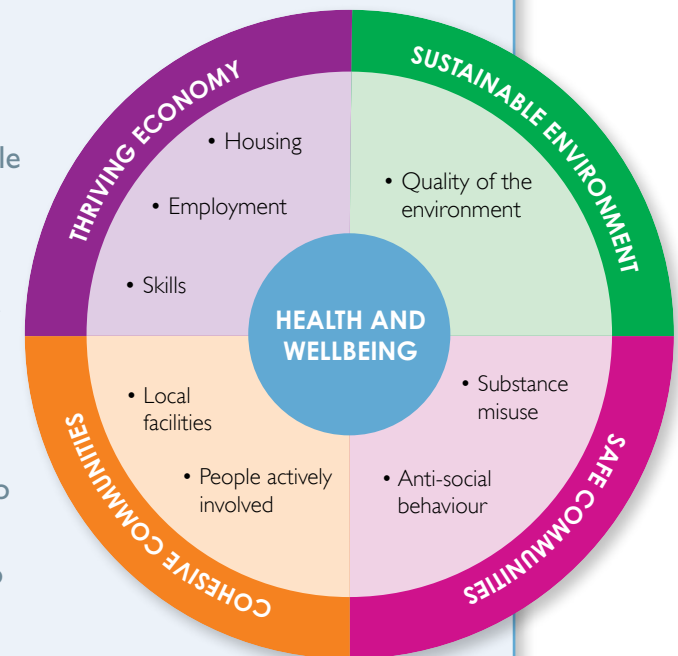
- Increase the provision of positive activities for children and young people and ensure they know what is available
- Encourage and enable children and young people to participate in decision making

### **Reduce homelessness**

- Ensure there are fewer homeless people in our District

### **Create well connected communities**

- Improve the transport network
- Improve access to health and leisure services to support our rural and urban communities
- Work with parishes, towns and communities to develop the local delivery of services to meet local needs



# Cohesive and Strong Communities



A key challenge is to give people the opportunity to have a real say in the decisions that affect their lives and their communities.

Chiltern's communities are becoming more diverse and we need to take a positive and sensitive approach and be flexible in meeting their needs. There is a greater need to understand our communities and how they relate to each other.

We believe we should make more use of our communities' potential and capacity for participation and volunteering which we believe is particularly great in Chiltern.

We must also address anti-social behaviour by promoting greater personal responsibility and respect for people's rights.



## “Strong, confident and active communities”

### We aim to:

#### **Sustain and grow a thriving voluntary and community sector**

- Increase community participation and volunteering whilst supporting the voluntary and community sectors

#### **Increase the confidence of communities**

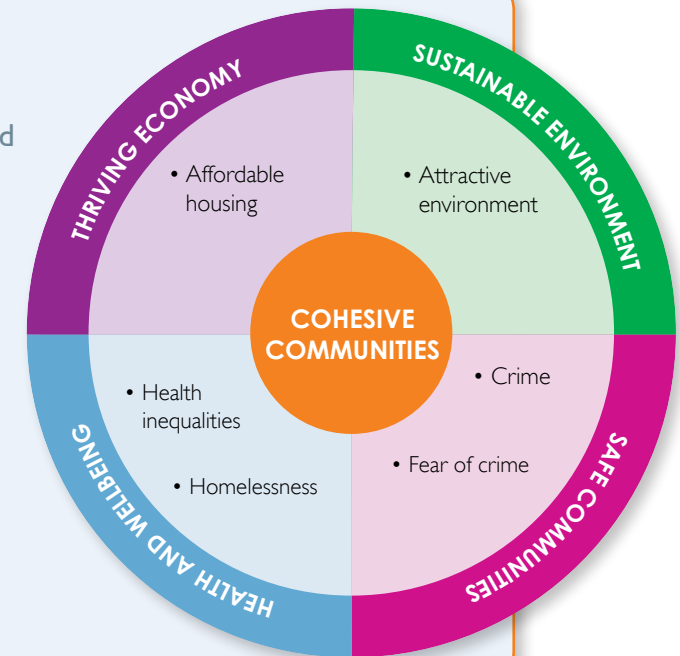
- Increase the confidence and ability communities have to deal with their own local issues
- Improve the opportunities for people to have their say and influence decisions
- Improve the way we deal with diversity and promote equality in our communities by working more closely with local people and communities

#### **Help all communities get on well together**

- Improve support for good relations within and between communities

#### **Reduce levels of disadvantage**

- Reduce deprivation and health inequality between different geographical areas and groups of people (see Health and wellbeing theme for more details)



**Bold** – shared aim across Buckinghamshire ○ – area focus in the Chiltern District

# What each one of us can do to make Chiltern a better place

We all have a part to play in making Chiltern a place we identify with and feel proud of.

We recognise that people have rights and responsibilities. Our partnerships will respect and promote those rights, while at the same time encourage personal responsibility. It is essential for individuals and communities to take positive action if our shared vision is to become a reality, as many improvements will require a combination of partnership work and individual lifestyle changes.

All the Buckinghamshire Local Strategic Partnerships are actively encouraging everyone in their areas to do something to help themselves and their local community, as this will directly help to achieve the outcomes in our Community Strategies. The following examples of individual actions would, if carried out by many people, make a significant contribution.

Could you do at least one new activity from the list to help?

- Take simple crime and fire prevention measures by locking doors and windows, fitting alarms, removing valuables from cars and security marking property.
- Join Neighbourhood Watch or other local watch schemes.
- Fit smoke alarms and regularly check the batteries to make sure the alarms are working.
- Adopt a healthy lifestyle by eating healthily, reducing smoking, and drinking sensibly to improve physical and mental wellbeing.
- Try to get at least half an hour of moderate exercise five times a week.
- Recycle as much household waste as possible and try to save energy around your home.
- Look out for neighbours, especially if they are elderly or frail.

- Join a local group or charity as a volunteer (ask a local volunteer centre for more information).
- Vote in elections and take part in local democracy.
- Support local shops, producers and businesses.
- Learn a new skill for work or pleasure.
- Walk, cycle or take public transport wherever possible.
- Help to keep your community clean and tidy.

This list is not comprehensive and we encourage individuals and communities to add their own ideas to suit their particular needs.

# Partnership Working in Bucks

For more information about the Chiltern Community Partnership

Please visit the website

[www.chiltern.gov.uk/chilternpartnership](http://www.chiltern.gov.uk/chilternpartnership)

You can contact us on

[chilternpartnership@chiltern.gov.uk](mailto:chilternpartnership@chiltern.gov.uk)

or call on **01494 732 779**

or write to:

**Chiltern Community Partnership  
Communications and Improvement  
Council Offices  
King George V Road  
Amersham  
Buckinghamshire  
HP6 5AW**

For regular news on issues affecting the County-level Bucks Strategic Partnership, visit their website [www.bucksisp.org.uk](http://www.bucksisp.org.uk) or subscribe to their electronic magazine, 'Buckinghamshire Together' on [www.buckinghamshiretogether.org.uk](http://www.buckinghamshiretogether.org.uk)

**The Chiltern Community Partnership includes representatives from:**

- o Chiltern District Council
- o Buckinghamshire County Council
- o Thames Valley Police
- o Buckinghamshire Fire and Rescue Service
- o Buckinghamshire Primary Care Trust
- o Paradigm Housing
- o Nexus Community
- o Parish and Town Councils
- o Local Revitalisation Groups and Community Partnerships
- o Buckinghamshire Economic and Learning Partnership
- o Federation of Small Businesses
- o Business Link
- o The Entertainer
- o Voluntary Impact
- o Bucks Community Action
- o Community Matters
- o The Chiltern Racial Equality Council
- o Chiltern Citizens Advice Bureau
- o Amersham and Wycombe College
- o Older Persons Action Groups
- o Chesham Probus
- o Chalfont St Peter Chamber of Commerce
- o Chiltern Arts Forum

If you would like this document in another format, larger print, or if you require the services of an interpreter, please contact us.

یہ دستاویز اگر آپ کو کسی دیگر زبان یا دیگر شکل میں درکار ہو، یا اگر آپ کو ترجمان کی خدمات چاہئیں تو برائے مہربانی ہم سے رابطہ کیجئے۔

本文件可以翻译为另一语文版本，或制作成另一格式，如有此需要，或需要传译员的协助，请与我们联系。

Jeżeli chcieliby Państwo otrzymać ten dokument w innym języku lub w innej formie albo jeżeli potrzebna jest pomoc tłumacza, to prosimy o kontakt z nami.

Checked for  
plain language  
by  
Writing Inc.